

Rustic & Distressed

Textured Options



Hand Hewn 31 Texture: 4000 newel, 4255 balusters, custom handrail

Rustic and Distressed Textured Options are done by hand. Each piece will vary from the next and will have its own unique qualities which proper finishing will enhance. Choose from a variety of textures and wood species in clear or character grade. Character grade will have knots, splits, holes etc., but no representation on how many or their size.

Stains and Finishes

Darker finishes will accent the textures that you chose. If lighter finishes are desired it is recommended that a black glaze be used as a background to enhance the visibility of the surfaces. Please consult with a professional finisher for guidance. (Products come unfinished. Examples below are shown with finishes by others.)

- Treads
- Risers
- Balusters
- Newels
- Handrails
- and more



4091-FP-VGF-RS2
Vertical Grain Douglas Fir
Rough Sawn #2
Clear Coat



4092-CW0-DIS1
Character White Oak
Distressed #1
Stained



4092-RP-CA-DIS2
Character Alder
Distressed #2
Antique Red/Black Glazed



Custom
4392-CHKY-HH11
Character Hickory
Hand Hewn #11
Black Glazed & Stained



ESN90-725-CW0-DIS2
Character White Oak
Distressed #2
Stained

Rustic and Distressed Selection Guide

(Products come unfinished. Shown with Clear Coat and Black Glazed/Stained as examples.)

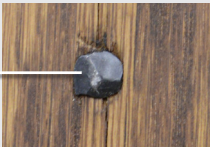


TEXTURE OPTIONS	CODE	Treads- top face & visible edges	Risers- front only	Box Newels	Square Balusters- 4 sides	Square Newels- 4 sides	Turned Balusters	Turned Newels	Handrail- 4 sides
Distressed #1^	DIS1	✓	✓	✓	✓	✓	✓	✓	✓
Distressed #2	DIS2	✓	✓	✓	✓	✓	✓	✓	✓
Hand Hewn #11	HH11	✓	✓	✓		✓			
Hand Hewn #31	HH31	✓	✓	✓	✓	✓			6002 & similar
Hand Scrape #50	HS50	✓	✓						
Rough Sawn #1	RS1	✓	✓	✓	✓	✓			
Rough Sawn #2	RS2	✓	✓	✓	✓	✓			

^ Distressed option #2 has heavier distressing than option #1

Other Options – Visible Rustic Nailheads

Decorative Wrought Iron Head Nails
1" L, Black Oxide



Cut Common Nails
1½" L, Black Oxide

